



Annalise LaPlume

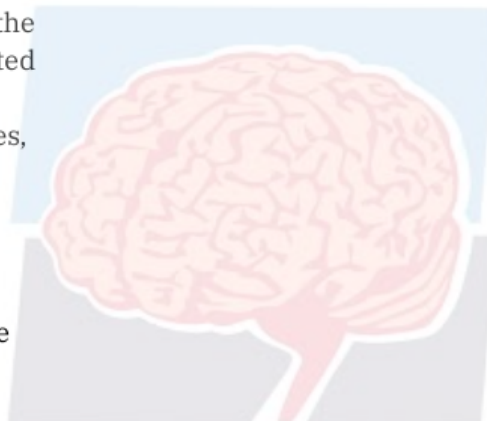


UNIVERSITY OF
TORONTO

About me

I am a postdoctoral researcher at the Rotman Research Institute (affiliated with the University of Toronto).

Fun fact: I have lived in 4 countries, and visited over 35!



Current research

I develop statistical models of lifespan cognition, & how it varies from one person to another, using large online datasets ($n > 40,000$).

My research explores

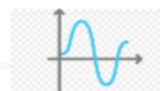
- How cognitive abilities (memory, attention, executive functions, intraindividual variability) change over the lifespan, and in Alzheimer's disease
- How individual difference factors influence lifespan trajectories, including health conditions (diabetes, hypertension), lifestyle factors (smoking, physical activity), cognitive reserve (education, learning music), and sex differences



Career Development



I have a PhD in Cognitive Neuroscience, and a graduate diploma in Quantitative Methods.

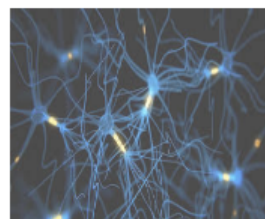


My long-term goal is to be a principal investigator, with a research program on the computational modelling of lifespan aging and brain health.



SPA Goals

- Advance my knowledge on longitudinal analyses and datasets
- Develop grant-writing skills
- Build a network of researchers who study longitudinal aging



@AnnaliseLaPlume